

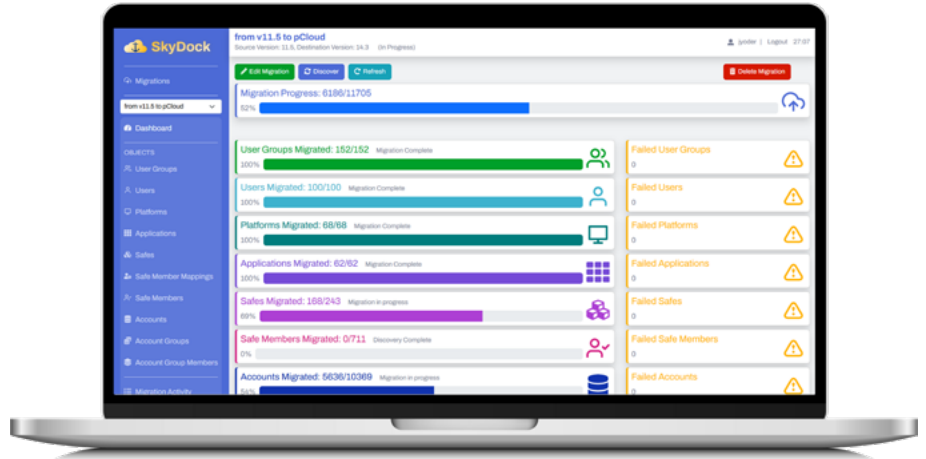
SkyDock CyberArk Migration Tool

Automate and accelerate migrations between CyberArk environments.



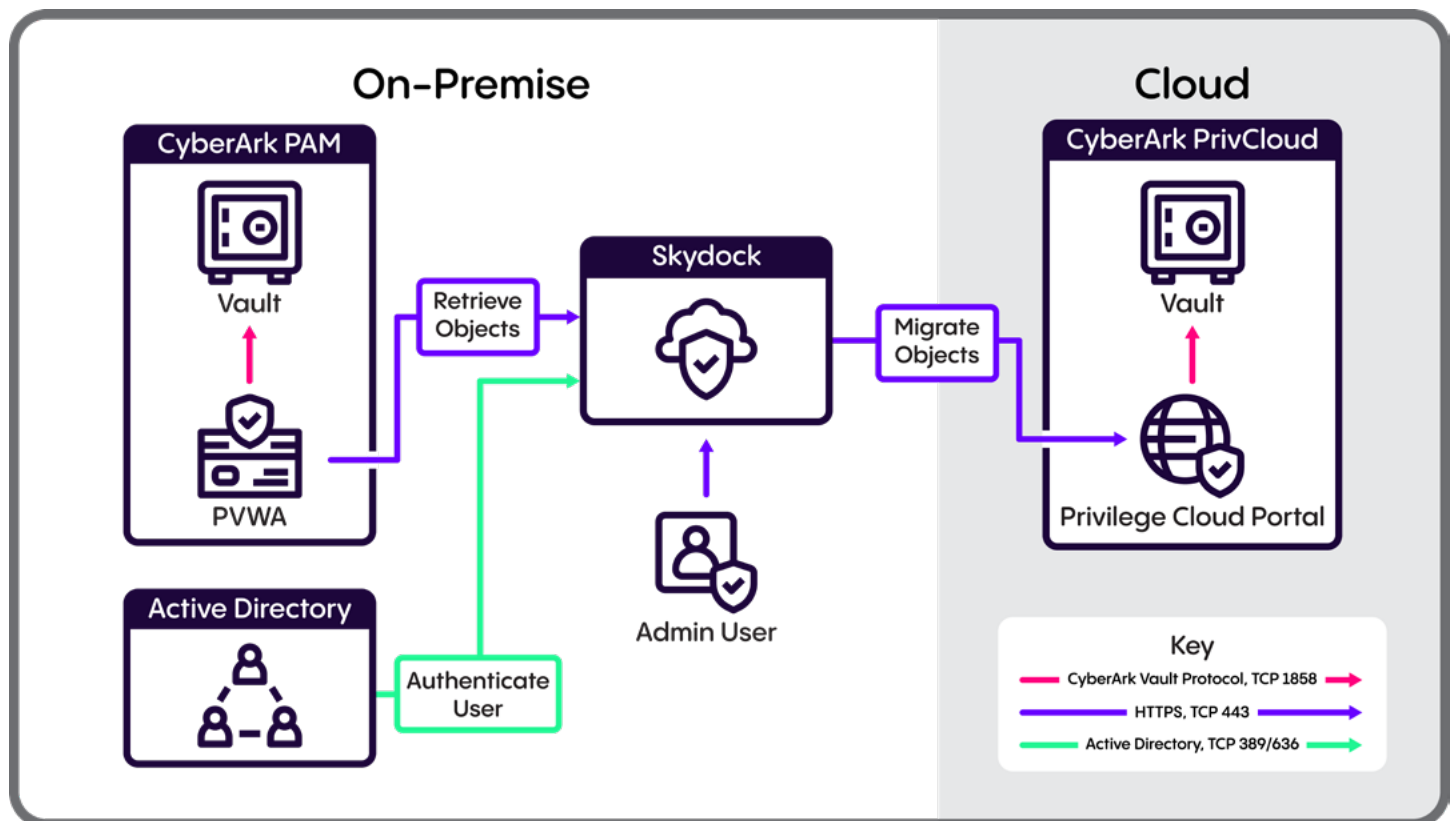
SkyDock is a specialized migration tool designed to automate and simplify migrations between CyberArk environments. Whether moving from on-premises to Privilege Cloud or between internal instances, SkyDock ensures data integrity, security, and operational continuity – without persisting secrets or requiring heavy manual effort.

How it Works



SkyDock connects to source and destination CyberArk environments using the REST API and performs object migrations with built-in threading for speed. It supports both full and selective transfers of users, safes, platforms, accounts, and applications. Permissions can be mapped or redefined during migration using Safe Member mapping.

Secrets are retrieved only at transfer time—never stored or logged. For security and compliance, SkyDock captures event log data through CyberArk’s Export Vault Data Utility (EVD), preserving it in a centralized repository. Errors are managed with retry and rollback mechanisms to maintain integrity throughout the migration process.



SkyDock CyberArk Migration Tool

Core Benefits of SkyDock

Eliminates Manual Effort	Automates complex, error-prone manual processes, improving accuracy and reducing operational overhead.
Accelerated Migrations	Threaded processing minimizes downtime and speeds up migrations, even in large or complex environments.
Secure by Design	Secrets are never stored, significantly reducing the risk of data exposure during migration.
Consistent and Accurate Transfers	Built-in logic and validation ensure accurate, standardized migration of users, safes, permissions, and configurations—including on-prem to Privilege Cloud.
Smarter Access Control	Safe Member mapping supports the consolidation and restructuring of permissions to align with modern role models..
Compliance-Ready	Detailed logging via CyberArk's EVD utility preserves event data to support audit and forensic requirements.
Flexible Execution	Selective object migration and customizable rules give organizations precise control over migration scope and sequencing.